



St Wilfrid's NEWSLETTER

A Few Reminders

A reminder that children are not allowed to bring "slime" into school. It would also be helpful if the children didn't bring in toys as these can get broken and detract from learning.

Chewing gum is also forbidden for health and safety reasons.

Thank you for your co-operation.

Sports Fixtures

We wish our Y5/6 Sports Hall Athletics team the very best of luck in the City Finals at Concord on Tuesday 16th January.

Upcoming Events:-

Y5/6 Bouldering qualification round Friday 2nd February

KS2 Keysteps Gymnastics Monday 26th February

U11 netball tournament at Girls' High Saturday 2nd March

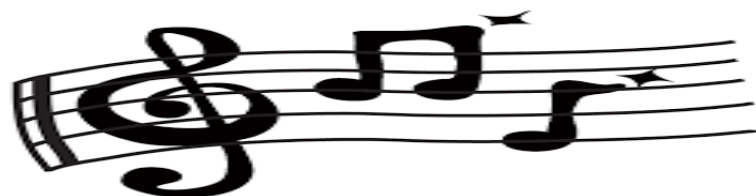
South Yorkshire Schools Orienteering Event

Saturday 20th January at Whirlow Brook Hall 1pm-3pm. This is free to all St Wilfrid's pupils. Suitable for children from Y3 upwards.



A Fabulous Musical Afternoon

We have been extremely fortunate to be visited by A-level musicians from All Saints School who have provided the children with an invaluable experience of listening to live music. The children had a fantastic time listening to different instruments and the music being played. A huge thank you goes to Mr Elliott - music teacher at All Saints for working with us.



St Wilfrid's Super Science!

Welcome to our new special weekly science feature.

This year, we are currently in the process of reapplying for our Primary Science Quality Mark. One of the lovely things about this is that we really reflect on all the science we do in school and recognise that there are lots of brilliant lessons and opportunities for learning about science at St Wilfrid's. This section of the newsletter will aim to share some of these with you. A different class will feature each week. To start us off, we will show you what Y6 have been learning about.

Y6 - Exploring Evolution and Adaptations

Before the Christmas holiday, all the upper KS2 classes went to Weston Park museum to begin their learning about adaptation and evolution. This was a wonderful experience as the children were able to study real animals up close so that they could identify the features that they had which enabled them to survive in their natural environments. It was wonderful to hear the children sharing their theories with each other and using real evidence to support these. All the children commented on how much they had enjoyed their day and how much they felt they had learnt.



Fascinating Fact - Did you know that an alligator has its nostrils higher than most of the rest of its body so it can lay in wait in the river to catch its prey? It also has blubber to help it to float.

Back in the classroom, we applied our understanding that different animals have different features to help us make simple keys. Later in the year, we will make and use keys to help us identify some of the living things in our local environment.



Prayer of the Week

Dear Jesus

We hope that everybody has a great time in 2018 and for CAFOD

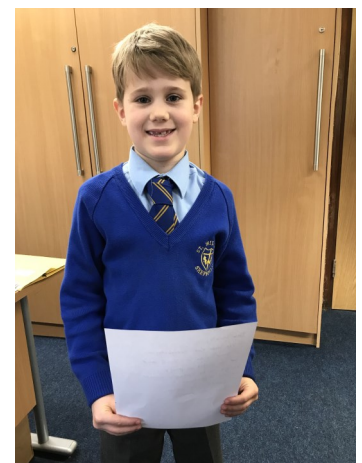
We pray that you give us the strength to make a real difference

Lord in your mercy

Hear our prayer

Amen

Walt Y3/4



Young Voices

The School Choir are looking forward to being part of Young Voices at the Sheffield Arena on Thursday 18th January.



Golden Broom

Well done to Y2 for being awarded the Golden Broom this week for the tidiest cloakroom area. Let's see which class wins it next week!

Expansion Consultation

The Trustees of the Diocese have given the Governing Body permission to begin a consultation period regarding the potential expansion of St Wilfrid's Primary School from 45 places to 60 places.

Why are we considering expansion?

There is a high demand for Catholic places in this area of Sheffield, which has meant that a number of Catholic children have not been offered a place in a Catholic school for three years running in the two Umbrella schools.

St Wilfrid's has been operating a model of mixed classes however this presents challenges with the National Curriculum 2014 because it is mastery curriculum based on year group expectations.

The workload of class teachers of mixed classes can be higher than those of single year group classes.

The move from 45 to 60 places is not as significant as 30 to 60.

St Wilfrid's has a large site with extensive outdoor spaces.

What are the key considerations?

In order to increase from 45 to 60 places, St Wilfrid's would need four additional classrooms with toilet and cloakroom facilities. This would involve applying to the Education Funding Agency through the Condition Improvement Fund.

As part of the expansion project, other areas of school would also need to be considered to ensure appropriate circulation, dining space, kitchen provision and access to outdoor space, etc.

It is likely that any building project of this size would need to be completed in phases.

This would be an opportunity to recruit several new members of staff.

There would be a number of associated challenges, such as parking outside of school, which would need to be explored.

The timescale would be dictated by the success or failure of the Condition Improvement Fund application, which would mean that the earliest the school could realistically admit its first 60 Reception children would be September 2019 and this would continue over a four year period until the school reached its new capacity.

This is a significant consideration for the Governing Body therefore we would encourage all stakeholders to share their comments or feelings.

Please email enquiries@stwilfridssheffield.co.uk with the subject 'expansion' by **February half term**.

Census Day

Thursday 18th January is Census Day and we would encourage as many children as possible to have school dinners on that day. On this day the school dinner menu will be replaced with All Day Breakfast.



The poster features a central sun with rays extending outwards. The background is a mix of blue and yellow. Various food items are illustrated with cartoon faces, including a tomato, a carrot, a bean, a sausage, and a piece of bacon. The text is arranged in a circular pattern around the sun.

All Day Breakfast

Special Census Day Menu

Thursday 18th January

**Bacon, Sausage,
Baked Beans,
Chopped Tomatoes and
Sautéed Potatoes**

OR

**(v) Quorn Sausage,
Baked Beans,
Chopped Tomatoes
and Sautéed Potatoes**

Chocolate Brownie with Ice Cream

Fresh Fruit and Yoghurt will Also be Available

Taylor Show
Serving Food Differently

Please note that menus may be subject to change in the event of any circumstance that unavoidably disrupts the School Meals Service.